

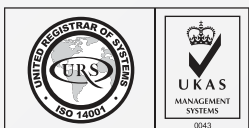


SF-B235 (UNC Series)
SF-B237 (UNF Series)

ANSI
ASME B18.3

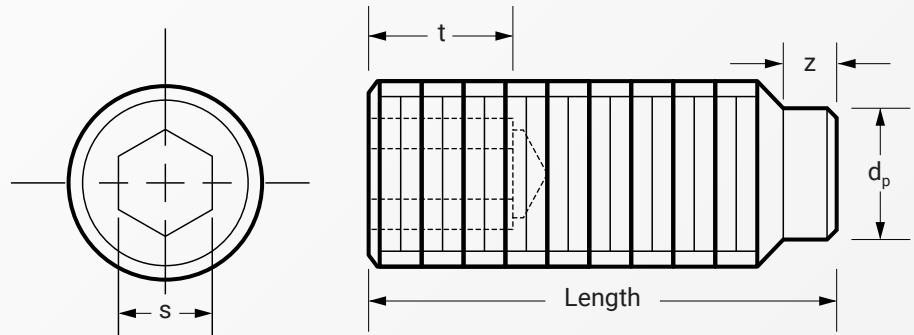
STAINLESS STEEL 316

Rockwell B80~



SOCKET SET SCREW HALF DOG POINT INCH (UNC & UNF THREAD)

STAINLESS STEEL 316 Rockwell B80~ RATED



Dimension	threads per inch		s	z _{max.(short)}	t	d _p	Length
	UNRC	UNRF					
#4	40	48	.050	.030	.075	.075	from 1/8"
#6	32	40	.0625	.038	.075	.092	from 3/16"
#8	32	36	.0781	.043	.075	.109	from 1/4"
#10	24	32	.0937	.049	.105	.127	from 3/16"
1/4	20	28	.125	.067	.105	.156	from 1/4"
5/16	18	24	.1562	.082	.140	.203	from 3/8"
3/8	16	24	.1875	.099	.140	.250	from 1/2"

Above datas are for reference only

Note:

B235 denotes Stainless Steel 316 with Rockwell B80~ hardness | UNC Series
B237 denotes Stainless Steel 316 with Rockwell B80~ hardness | UNF Series

Part number built example:

e.g. (1) Diameter 1/4-20 unc X 1/4" in stainless steel 316 » SF-B235 1/4X1/4
e.g. (2) Diameter 1/4-28 unf X 1/4" in stainless steel 316 » SF-B237 1/4X1/4



sales@synergixfast.com



www.synergixfast.com



Phone: +65 6 316 2630 | Fax: +65 6 316 2730