



SF-D094 Series (UNF)

IFI 111
SAE J429

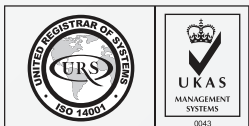
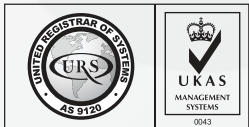
CARBON STEEL GRADE 8

BLACK PHOSPHATE

Other Finish Options:
ZINC YELLOW

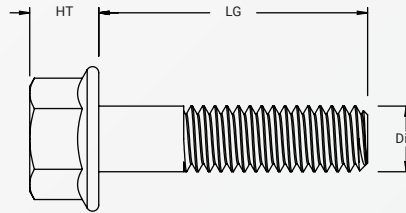
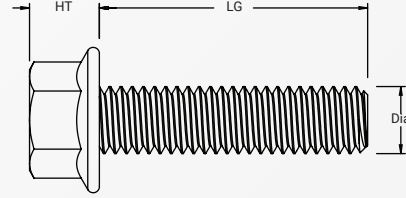
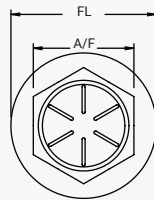
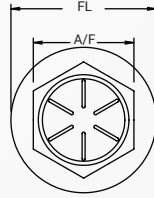


RoHS Directive Compliance



HEXAGON HEAD FLANGE SCREW INCH (UNF THREAD) CARBON STEEL GRADE 8

BLACK PHOSPHATE | ZINC YELLOW*



Dimension (UNF)	Head Width (A/F)	Head Height (HT)	Flange Dia. (FL)	Length (LG)	Thread
FULL THREAD OPTION					
10-32	5/16"	7/32"	29/64"	from 1/2"	Full
1/4"-28	3/8"	9/32"	9/16"	from 3/4"	Full
5/16"-24	1/2"	21/64"	11/16"	from 3/4"	Full
3/8"-24	9/16"	25/64"	13/16"	from 3/4"	Full
7/16"-20	5/8"	15/32"	15/16"	from 1.0"	Full
1/2"-20	3/4"	33/64"	1 5/64"	from 1.0"	Full
5/8"-18	15/16"	5/8"	1 21/64"	from 1-1/2"	Full
3/4"-16	1 1/8"	47/64"	1 19/32"	from 1-3/4"	Full
PARTIAL THREAD OPTION					
5/16"-24	1/2"	21/64"	11/16"	from 1-1/2"	min 7/8"
3/8"-24	9/16"	25/64"	13/16"	from 2-1/2"	min 1.0"
1/2"-20	3/4"	33/64"	1 5/64"	from 2.0"	min 1-1/4"
5/8"-18	15/16"	5/8"	1 21/64"	from 3.0"	min 1-1/2"
3/4"-16	1 1/8"	47/64"	1 19/32"	from 2-1/4"	min 1-3/4"

Above datas are for reference only

Note:

D094 denotes unf hex flange screw in steel black phosphate grade 8 rated

Full & partial thread as above both tables described

Zinc yellow plated bolts, resist corrosion in wet environments

*For optional finish, add "-ZY" for zinc yellow on part number.

Part number built example:

e.g. (1) Diameter 1/2-20 X 1" in steel gr8 black phos.

>> SF-D094 1/2X1

e.g. (2) Diameter 1/2-20 X 1" in steel gr8 zinc yellow

>> SF-D094 1/2X1-ZY



sales@synergixfast.com



www.synergixfast.com



Phone: +65 6 316 2630 | Fax: +65 6 316 2730