



SF-A003P3 SERIES
SF-A100P3 SERIES

JIS B 1176 (Ref.)

STEEL CLASS 10.9

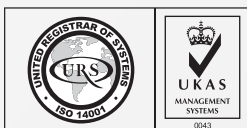
ZINC PLATE

STAINLESS A2

PASSIVATED

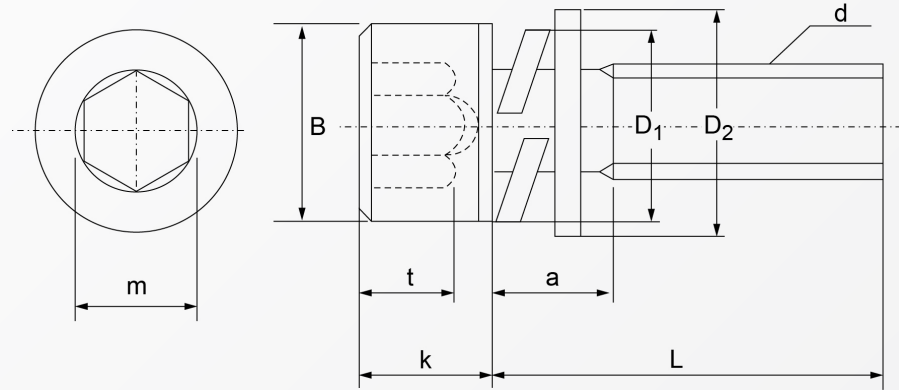


RoHS Directive Compliance



SEMS SOCKET CAP SCREW P3 (FLAT & SPRING WASHER COMBI)

STEEL CLASS 10.9 ZB | STAINLESS A2



Type of Screw (d)		M3	M4	M5	M6	M8	M10	M12
	Pitch (p)	0.5	0.7	0.8	1	1.25	1.5	1.75
B	Nominal Dimensions	5.5	7	8.5	Ten	13	16	18
	maximum (ref.)	5.68	7.22	8.72	10.22	13.27	16.27	18.27
	minimum (ref.)	5.32	6.78	8.28	9.78	12.73	15.73	17.73
k	Nominal Dimensions	3	4	5	6	8	10	12
	minimum (ref.)	2.86	3.82	4.82	5.7	7.64	9.64	11.57
m	Nominal Dimensions	2.5	3	4	5	6	8	10
	minimum (ref.)	2.52	3.02	4.02	5.02	6.02	8.025	10.025
	maximum (ref.)	2.56	3.08	4.095	5.095	6.095	8.115	10.115
t	minimum (ref.)	1.3	2	2.5	3	4	5	6
D1	maximum (ref.)	5.5	7	8.5	11.5	14.5	17.5	20.5
D2	maximum (ref.)	7	9	Ten	12.5	17	21	24
a	maximum (ref.)	3	4.4	5.4	6.9	8.4	10.4	12.5

Above datas are for reference only

Part number built example:

e.g. (1) Select Diameter M4X25 in steel material >> SF-A003P3 4X25
e.g. (2) Select Diameter M8X30 in stainless steel A2 material >> SF-A100P3 8X30



sales@synergixfast.com



www.synergixfast.com



Phone: +65 6 316 2630 | Fax: +65 6 316 2730