



SF-G010P3 SERIES  
SF-G100P3 SERIES

JIS B 1111 (Ref.)

STEEL 4.8

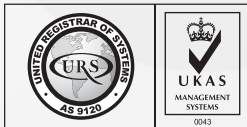
ZINC PLATED

STAINLESS A2

PASSIVATED

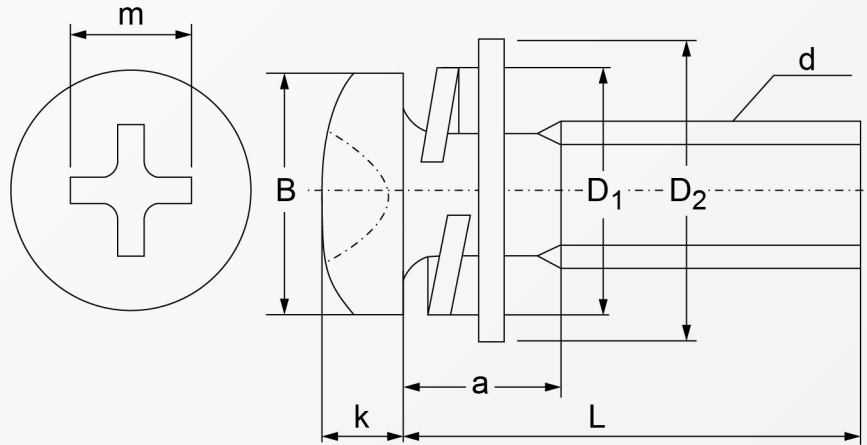


RoHS Directive Compliance



# SEMS PHILIP MACHINE SCREW P3 (WITH FLAT & SPRING WASHER)

STEEL 4.8 | ZINC PLATED  
STAINLESS A2 | PASSIVATED



Diameter of Screw			M3	M4	M5	M6	M8
Pan Head	B	Standard dimensions	5.5	7	9	10.5	14
		tolerance	0 / -0.5	0 / -0.5	0 / -0.6	0 / -0.7	0 / -0.8
	k	Standard dimensions	2	2.6	3.3	3.9	5.2
		tolerance	±0.15			±0.20	
Cross recess number			2			3	
Flat washer	D2 (maximum)	Standard dimensions	8	10	12	13	18
		tolerance	0 / -0.35			0 / -0.4	
	Thickness	Standard dimensions	0.5	0.8		1	1.6
Spring washer	D1 (maximum)		5.5	7	8.5	11.5	14.5
	Width x Thickness		1.1 x 0.7	1.4 x 1.0	1.7 x 1.3	2.7 x 1.5	3.2 x 2
From the washer to the complete threaded portion (a) maximum			3	4.4	5.4	6.9	8.4
Length			from 6mm	from 8mm	from 10mm	from 12mm	from 16mm

Above datas are for reference only

Part number built example:

e.g. (1) Select Diameter M3X12 in steel material >> SF-G010P3 3X20  
e.g. (2) Select Diameter M5X20 in stainless steel A2 material >> SF-G100P3 5X20



sales@synergixfast.com



www.synergixfast.com



Phone: +65 6 316 2630 | Fax: +65 6 316 2730