



SF-C082 SERIES
SF-C082 XXX-
ZFL SERIES

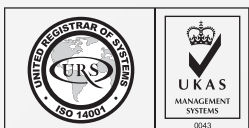
STEEL CLASS 100

BLACK

ZINC FLAKES 480HR

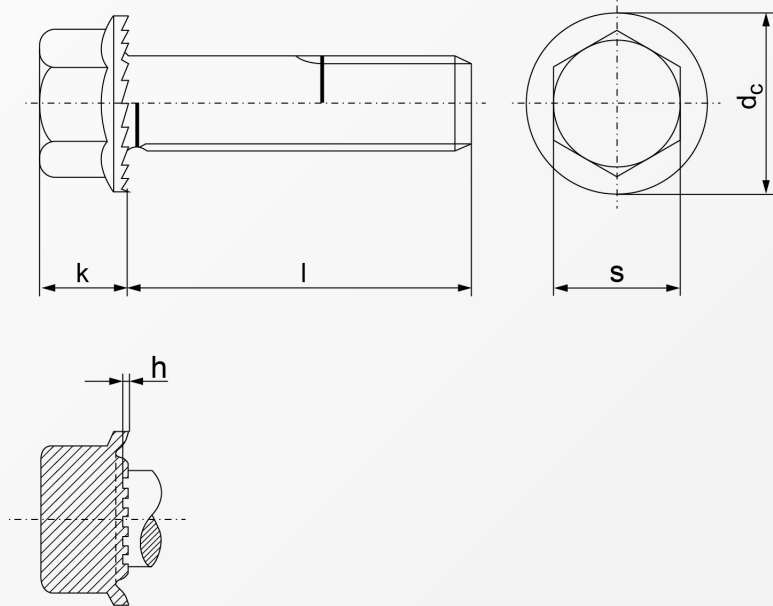


RoHS Directive Compliance



HEXAGON FLANGE SCREW CL100 (SERRATION)

BLACK & ZINC FLAKES 480HR



Dimensions	d_c	$h_{min.}$	k	s	qty.serrations	Length
M 5	11.2	0.15	4.3	8	24	from 8mm
M 6	14.25	0.17	5.5	10	24	from 10mm
M 8	18.25	0.2	7	13	24	from 12mm
M 10	21	0.25	7.9	15	24	from 16mm
M 12	24	0.25	8.7	17	24	from 20mm
M 16	31	0.28	11.2	22	24	from 25mm
M 16	4	31	14	22	72	from 25mm

Above datas are for reference only

Note:

C082 denotes Class 10 steel black & C082 XXX-ZFL denotes with zinc flakes coating

Part number built example:

e.g. (1) Diameter M8 X 45 in steel black material

»SF-C082 8X45

e.g. (2) Diameter M10 X 25 in steel material with zinc flakes coating

»SF-C082 10X25-ZFL



sales@synergixfast.com



www.synergixfast.com



Phone: +65 6 316 2630 | Fax: +65 6 316 2730