



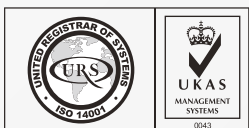
SF-E075 SERIES

DIN 985
ISO 10511

STEEL

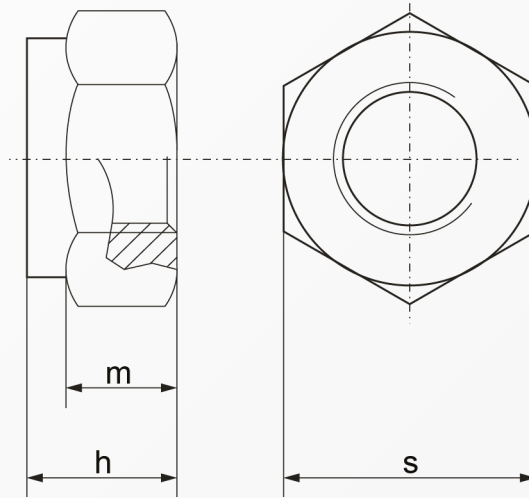
CLASS 6 | 8***

ZINC PLATE



HEXAGON LOCK NUT WITH NYLON INSERT (THIN TYPE)

STEEL CLASS 6/8*** ZINC



Dimensions	$h_{\text{max. ISO/DIN}}$	$m_{\text{min. ISO/DIN}}$	$s_{\text{ISO/DIN}}$
M 2*	2.4	-	4
M 2.5*	3.6	-	5
M 3	3.9/4	1.55/2.4	5.5
M 4	5	1.9/2.9	7
M 5	5	2.5/3.2	8
M 6	6	2.9/4	10
M 7	7.5	4.7	11
M 8	6.8/8	3.7/5.5	13
M 10	5.6/10	4.7/6.5	16/17
M 12	10.2/12	5.7/8	18/19
M 14	11.3/14	6.4/9.5	21/22
M 16	12.4/16	7.4/10.5	24
M 18**	18.5	13	27
M 20	14.9/20	9.1/14	30
M 22**	22	15	34/32
M 24	17.8/24	10.9/15	36
M 27**	27	17	41
M 30	22.2/30	13.9/19	46
M 33**	33	22	50
M 36	25.5/36	16.9/25	55
M 39**	39	27	60
M 42**	42	29	65
M 45**	45	32	70
M 48**	48	36	75

Above datas are for reference only

* & ** dimensions not listed in ISO standard

For use at temperature -50 to +120 degree

*** denotes \leq M5, M4, M3, M2 & m2.5 : property class = 6 (reference only)

Note:

E075 denotes steel class 6/8 zinc plate

Part number built example:

e.g. (1) Diameter M10 in steel class 8 material

>> SF-E075 M10

e.g. (2) Diameter M5 in steel class 6 material

>> SF-E075 M5

e.g. (3) Diameter M8 in steel class 8 material (ISO Rated)

>> SF-E075 M8-ISO



sales@synergixfast.com



www.synergixfast.com



Phone: +65 6 316 2630 | Fax: +65 6 316 2730