



SF-E077 SERIES

DIN 985
ISO 10511

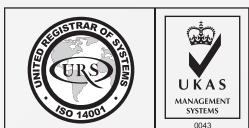
STEEL

CLASS 10

ZINC PLATE

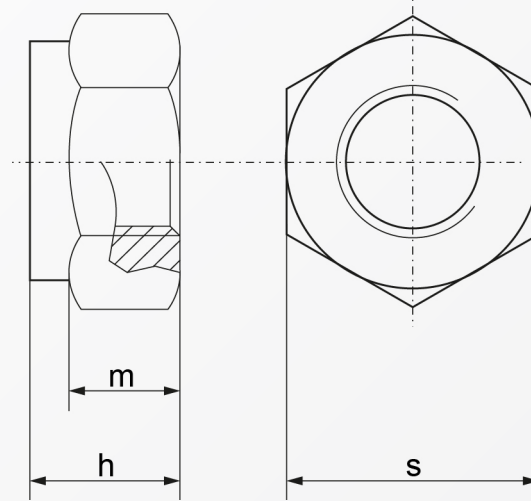


RoHS Directive Compliance



HEXAGON LOCK NUT WITH NYLON INSERT (THIN TYPE)

STEEL CLASS 10 ZINC



Dimensions	$h_{\text{max. ISO/DIN}}$	$m_{\text{min. ISO/DIN}}$	$s_{\text{ISO/DIN}}$
M 2.5*	3,6	-	5
M 3	3.9/4	1.55/2.4	5.5
M 4	5	1.9/2.9	7
M 5	5	2.5/3.2	8
M 6	6	2.9/4	10
M 7	7.5	4.7	11
M 8	6.8/8	3.7/5.5	13
M 10	5,6/10	4.7/6.5	16/17
M 12	10.2/12	5.7/8	18/19
M 14	11.3/14	6.4/9.5	21/22
M 16	12,4/16	7.4/10.5	24
M 18**	18.5	13	27
M 20	14.9/20	9.1/14	30
M 22**	22	15	34/32
M 24	17.8/24	10.9/15	36
M 27**	27	17	41
M 30	22.2/30	13.9/19	46
M 33**	33	22	50
M 36	25.5/36	16.9/25	55
M 39**	39	27	60
M 42**	42	29	65
M 45**	45	32	70
M 48**	48	36	75

Above datas are for reference only
* & ** dimensions not listed in ISO standard
For use at temperature -50 to +120 degree
Class 10 material, starts from M6 diameter

Note:
E077 denotes steel class 10 zinc plate

Part number built example:

e.g. (1) Diameter M10 in steel class 10 material >>SF-E077 M10
e.g. (2) Diameter M8 in steel class 10 material (ISO Rated) >>SF-E077 M8-ISO



sales@synergixfast.com



www.synergixfast.com



Phone: +65 6 316 2630 | Fax: +65 6 316 2730