



SF-E150 SERIES
SF-E160 SERIES

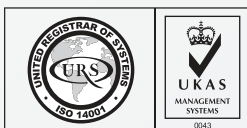
DIN 985
ISO 10511

STAINLESS
STEEL

A2 & A4

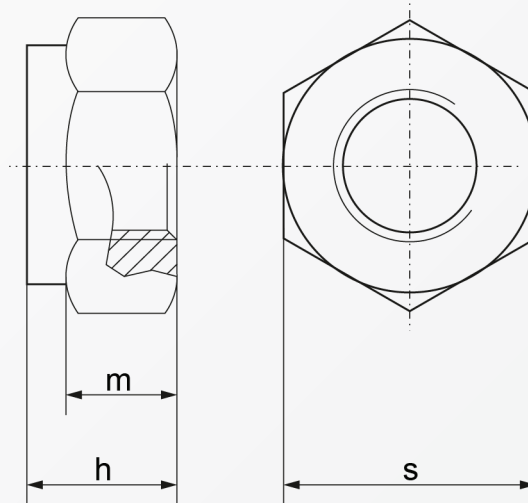


RoHS Directive Compliance



HEXAGON LOCK NUT WITH NYLON INSERT (THIN TYPE)

STAINLESS A2 & A4



| Dimensions | $h_{\max. \text{ ISO/DIN}}$ | $m_{\min. \text{ ISO/DIN}}$ | $s_{\text{ ISO/DIN}}$ |
|------------|-----------------------------|-----------------------------|-----------------------|
| M 2* | 2.4 | - | 4 |
| M 2.5* | 3.6 | - | 5 |
| M 3 | 3.9/4 | 1.55/2.4 | 5.5 |
| M 4 | 5 | 1.9/2.9 | 7 |
| M 5 | 5 | 2.5/3.2 | 8 |
| M 6 | 6 | 2.9/4 | 10 |
| M 7 | 7.5 | 4.7 | 11 |
| M 8 | 6.8/8 | 3.7/5.5 | 13 |
| M 10 | 5.6/10 | 4.7/6.5 | 16/17 |
| M 12 | 10.2/12 | 5.7/8 | 18/19 |
| M 14 | 11.3/14 | 6.4/9.5 | 21/22 |
| M 16 | 12.4/16 | 7.4/10.5 | 24 |
| M 18** | 18.5 | 13 | 27 |
| M 20 | 14.9/20 | 9.1/14 | 30 |
| M 22** | 22 | 15 | 34/32 |
| M 24 | 17.8/24 | 10.9/15 | 36 |
| M 27** | 27 | 17 | 41 |
| M 30 | 22.2/30 | 13.9/19 | 46 |
| M 33** | 33 | 22 | 50 |
| M 36 | 25.5/36 | 16.9/25 | 55 |
| M 39** | 39 | 27 | 60 |
| M 42** | 42 | 29 | 65 |
| M 45** | 45 | 32 | 70 |
| M 48** | 48 | 36 | 75 |

Above datas are for reference only

* & ** dimensions not listed in ISO standard

For use at temperature -50 to +120 degree

*** denotes \leq M5, M4, M3, M2 & m2.5 : property class = 6 (reference only)

Part number built example:

e.g. (1) Select Diameter M8 in stainless A2 material

» SF-E150 M8

e.g. (2) Select Diameter M20 in stainless A4 material

» SF-E160 M20

e.g. (3) Select Diameter M12 in stainless A2 material (ISO Rated) » SF-E150 M8-ISO



sales@synergixfast.com



www.synergixfast.com



Phone: +65 6 316 2630 | Fax: +65 6 316 2730