



## SF-G055 SERIES

ISO 2010  
DIN 964~

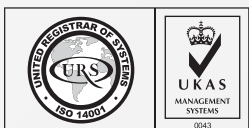
STEEL

4.8

ZINC PLATE

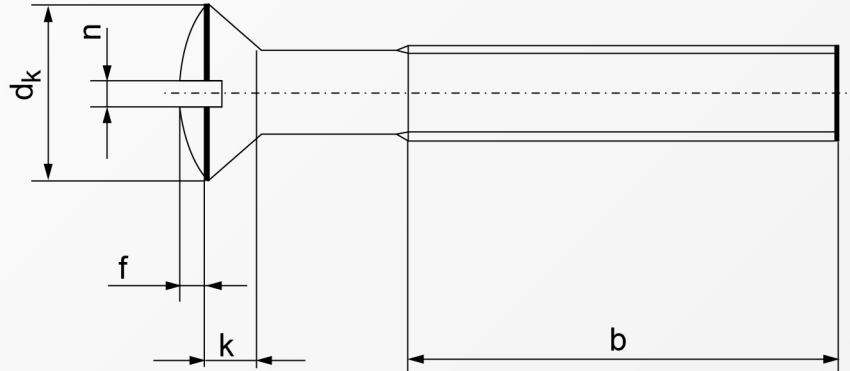


RoHS Directive Compliance



# SLOTTED RAISED COUNTERSUNK HEAD SCREW

STEEL GRADE 4.8 ZINC



Dimensions	$d_k$ ISO/DIN	$k$ ISO/DIN	$b$	$f$	$n$	Length
M 2	3.8	1.2	16	0.5	0.5	from 5mm
M 2.5	4.7	1.5	18	0.6	0.6	from 5mm
M 3	5.6	1.65	19	0.75	0.8	from 5mm
M 4	8.4/7.5	2.7/2.2	22	1	1	from 5mm
M 5	9.3/9.2	2.7/2.5	25	1.25	1.2	from 6mm
M 6	11.3/11	3.3/3	28	1.5	1.6	from 8mm
M 8	15.8/14.5	4.65/4	34	2	2	from 12mm
M 10	18.3/18	5	40	2.5	2.5	from 20mm

Above datas are for reference only

Note:  
G055 denotes steel 4.8 zinc

Part number built example:

e.g. (1) Diameter 4X12 thread in steel 4.8 zinc      »SF-G055 4X12



sales@synergixfast.com



www.synergixfast.com



Phone: +65 6 316 2630 | Fax: +65 6 316 2730