



SF-G600 SERIES
SF-G610 SERIES

DIN 660 | DIN 661

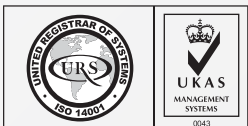
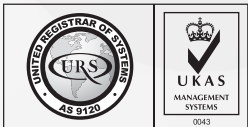
STAINLESS
STEEL

A2

PASSIVATED

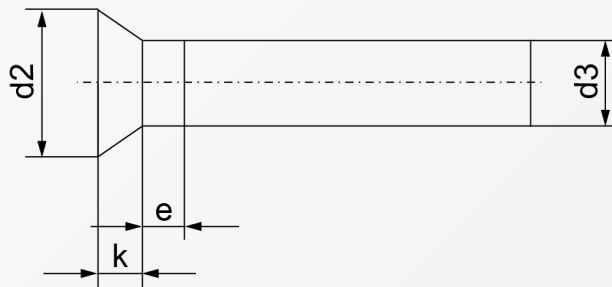
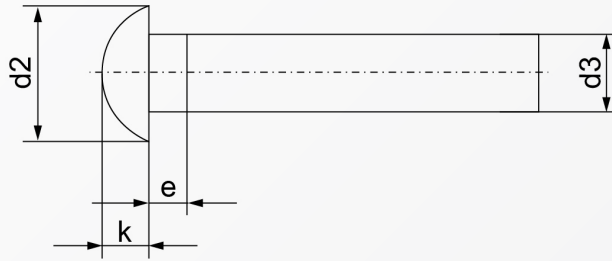


RoHS Directive Compliance



ROUND HEAD | COUNTERSUNK HEAD RIVETS

STAINLESS A2



Dimensions	d_2	$d_{3 \text{ min.}}$	$e_{\text{max.}}$	$k_{\text{DIN 660}}$	$k_{\text{DIN 661}}$
1	1.8	0.93	0.5	0.6	0.5
2	3.5	1.87	1	1.2	1
2.5	4.4	2.37	1.25	1.5	1.2
3	5.2	2.87	1.5	1.8	1.4
4	7	3.87	2	2.4	2
5	8.8	4.82	2.5	3	2.5
6	10.5	5.82	3	3.6	3
7	12.2	6.82	3.5	4.2	3.5
8	14	7.76	4	4.8	4
10*	16	9.4	5	6.5	-

Above datas are for reference only
*dimension acc. to DIN 124

Note:
G600 denotes Round Head
G610 denotes Countersunk Head

Part number built example:

e.g. (1) Diameter M5X16 in stainless A2 Round Head » SF-G600 5X16-A2
e.g. (2) Diameter M6X25 in stainless A2 Countersunk Head » SF-G610 6X25-A2



sales@synergixfast.com



www.synergixfast.com



Phone: +65 6 316 2630 | Fax: +65 6 316 2730