



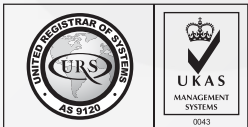
SF-G616 SERIES  
SF-G618 SERIES

DIN 660 | DIN 661

ALUMINIUM

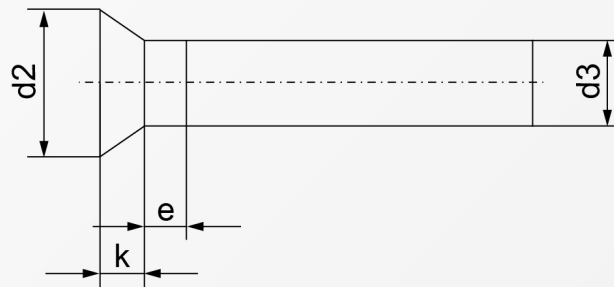
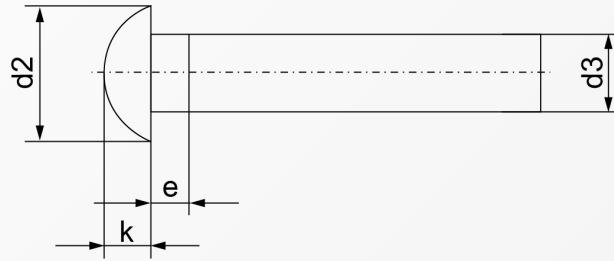


RoHS Directive Compliance



# ROUND HEAD | COUNTERSUNK HEAD RIVETS

ALUMINIUM



Dimensions	$d_2$	$d_{3 \text{ min.}}$	$e_{\text{max.}}$	$k_{\text{DIN 660}}$	$k_{\text{DIN 661}}$
1	1.8	0.93	0.5	0.6	0.5
2	3.5	1.87	1	1.2	1
2.5	4.4	2.37	1.25	1.5	1.2
3	5.2	2.87	1.5	1.8	1.4
4	7	3.87	2	2.4	2
5	8.8	4.82	2.5	3	2.5
6	10.5	5.82	3	3.6	3
7	12.2	6.82	3.5	4.2	3.5
8	14	7.76	4	4.8	4
10*	16	9.4	5	6.5	-

Above datas are for reference only  
\*dimension acc. to DIN 124

Note:  
G616 denotes aluminium material in round head style  
G618 denotes aluminium material in countersunk head style

Part number built example:

e.g. (1) Diameter 4X20 in aluminum, round head      » SF-G616 4X20  
e.g. (2) Diameter 5X16 in aluminum, countersunk head      » SF-G618 5X16



sales@synergixfast.com



www.synergixfast.com



Phone: +65 6 316 2630 | Fax: +65 6 316 2730