



SF-G620 SERIES
SF-G622 SERIES

DIN 7337~ (Ref.)

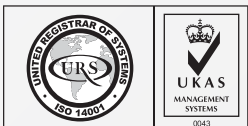
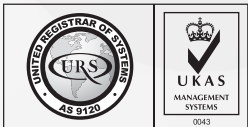
STAINLESS
STEEL

A2 | A2
A4 | A4

PASSIVATED

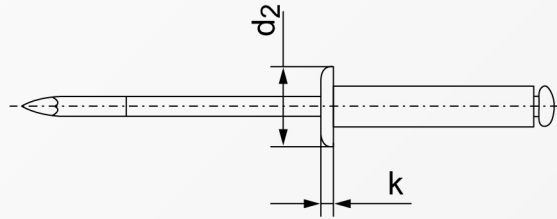


RoHS Directive Compliance



BLIND RIVETS OPEN END (PROTRUDING HEAD)

STAINLESS STEEL A2 & A4



Nominal \emptyset	2.4	3	3.2	4	4.8	5	6	6.4
d2	5	6.5	6.5	8	9.5	9.5	12	13
k	0.65	1.0	1.0	1.2	1.3	1.3	1.5	1.8
drill \emptyset	2.5	3.1	3.3	4.1	4.9	5.1	6.1	6.5
Material rivet	Shear strength (Tensile strength)							
A 2, A 4	-	1800	1900	2700	4000	4700	-	-
Length	Clamping length range (min. - max.)							
4	0.5-1.5	0.5-1.5	0.5-1.5	-	-	-	-	-
5	-	1.5-2.5	-	0.5-1.5	-	-	-	-
6	1.5-3.5	2.5-3.5	1.5-3.5	1.5-3.0	2.0-2.5	2.0-2.5	-	-
8	3.5-5.0	4.5-5.0	3.5-5.0	4.0-5.0	2.5-4.5	2.5-4.5	2.0-3.0	-
10	-	5.0-7.0	5.0-7.0	5.0-6.5	4.5-6.0	4.5-6.0	3.0-5.0	-
12	-	7.0-9.0	7.0-9.0	6.5-8.5	6.0-8.0	6.0-8.0	5.0-7.0	2.0-6.0
14	-	9.0-11.0	9.0-11.0	8.5-10.5	8.0-10.0	8.0-10.0	-	-
16	-	11.0-13.0	11.0-13.0	10.5-12.5	10.0-12.0	10.0-12.0	7.0-11.0	6.0-10.0
18	-	13.0-15.0	13.0-15.0	10.5-12.5	12.0-14.0	12.0-14.0	11.0-13.0	10.0-12.0
20	-	15.0-17.0	15.0-17.0	14.5-16.5	14.0-15.0	14.0-15.0	13.0-15.0	12.0-14.0
25	-	17.0-22.0	17.0-22.0	16.5-21.5	15.0-20.0	15.0-20.0	15.0-20.0	14.0-18.0
30	-	22.0-26.0	-	21.5-26.0	20.0-25.0	20.0-25.0	20.0-24.0	18.0-23.0
35	-	-	-	26.0-30.0	-	25.0-30.0	24.0-29.0	-
40	-	-	-	30.0-35.0	-	30.0-35.0	29.0-34.0	-
45	-	-	-	-	-	35.0-40.0	-	-
50	-	-	-	-	-	40.0-45.0	34.0-44.0	-
60	-	-	-	-	-	48.0-52.0	-	-
65	-	-	-	-	-	52.0-57.0	-	-
70	-	-	-	-	-	57.0-62.0	-	-
80	-	-	-	-	-	62.0-72.0	-	-

Above datas are for reference only
Mandrel & stem, same matching material

Note:
G620 denotes Stainless A2|A2 & G622 denotes Stainless A4|A4

Part number built example:
e.g. (1) Diameter M3.2 X 12 in stainless A2/A2 material »SF-G620 3.2X12
e.g. (2) Diameter M4 X 16 in stainless A4/A4 material »SF-G622 4X16



sales@synergixfast.com



www.synergixfast.com



Phone: +65 6 316 2630 | Fax: +65 6 316 2730