



SF-G624 SERIES

DIN 7337~ (Ref.)

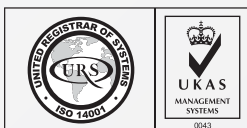
ALUMINIUM ALLOY

ALU | ALU

PLAIN

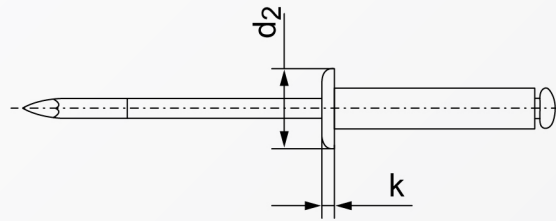


RoHS Directive Compliance



BLIND RIVETS OPEN END (PROTRUDING HEAD)

ALUMINIUM



Nominal \emptyset	2.4	3	3.2	4	4.8	5	6	6.4
d2	5	6.5	6.5	8	9.5	9.5	12	13
k	0.65	1.0	1.0	1.2	1.3	1.3	1.5	1.8
drill \emptyset	2.5	3.1	3.3	4.1	4.9	5.1	6.1	6.5
Material rivet	Shear strength (Tensile strength)							
ALU ALU	350	550	750	1250	1850	2150	3200	3400
Length	Clamping length range (min. - max.)							
4	0.5-1.5	0.5-1.5	0.5-1.5	-	-	-	-	-
5	-	1.5-2.5	-	0.5-1.5	-	-	-	-
6	1.5-3.5	2.5-3.5	1.5-3.5	1.5-3.0	2.0-2.5	2.0-2.5	-	-
8	3.5-5.0	4.5-5.0	3.5-5.0	4.0-5.0	2.5-4.5	2.5-4.5	2.0-3.0	-
10	-	5.0-7.0	5.0-7.0	5.0-6.5	4.5-6.0	4.5-6.0	3.0-5.0	-
12	-	7.0-9.0	7.0-9.0	6.5-8.5	6.0-8.0	6.0-8.0	5.0-7.0	2.0-6.0
14	-	9.0-11.0	9.0-11.0	8.5-10.5	8.0-10.0	8.0-10.0	-	-
16	-	11.0-13.0	11.0-13.0	10.5-12.5	10.0-12.0	10.0-12.0	7.0-11.0	6.0-10.0
18	-	13.0-15.0	13.0-15.0	10.5-12.5	12.0-14.0	12.0-14.0	11.0-13.0	10.0-12.0
20	-	15.0-17.0	15.0-17.0	14.5-16.5	14.0-15.0	14.0-15.0	13.0-15.0	12.0-14.0
25	-	17.0-22.0	17.0-22.0	16.5-21.5	15.0-20.0	15.0-20.0	15.0-20.0	14.0-18.0
30	-	22.0-26.0	-	21.5-26.0	20.0-25.0	20.0-25.0	20.0-24.0	18.0-23.0
35	-	-	-	26.0-30.0	-	25.0-30.0	24.0-29.0	-
40	-	-	-	30.0-35.0	-	30.0-35.0	29.0-34.0	-
45	-	-	-	-	-	35.0-40.0	-	-
50	-	-	-	-	-	40.0-45.0	34.0-44.0	-
60	-	-	-	-	-	48.0-52.0	-	-
65	-	-	-	-	-	52.0-57.0	-	-
70	-	-	-	-	-	57.0-62.0	-	-
80	-	-	-	-	-	62.0-72.0	-	-

Above datas are for reference only
Mandrel & stem, same matching material

Note:
G624 denotes aluminium material for both rivet & mandrel

Part number built example:

e.g. (1) Diameter Dia 4.8 X 20 in ALU/ALU material

»SF-G624 4.8X20



sales@synergixfast.com



www.synergixfast.com



Phone: +65 6 316 2630 | Fax: +65 6 316 2730