



SF-K010 SERIES
SF-K100 SERIES

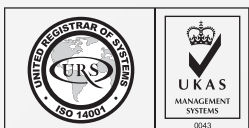
DIN 6799

STEEL BLACK

STAINLESS STEEL
1.4122**

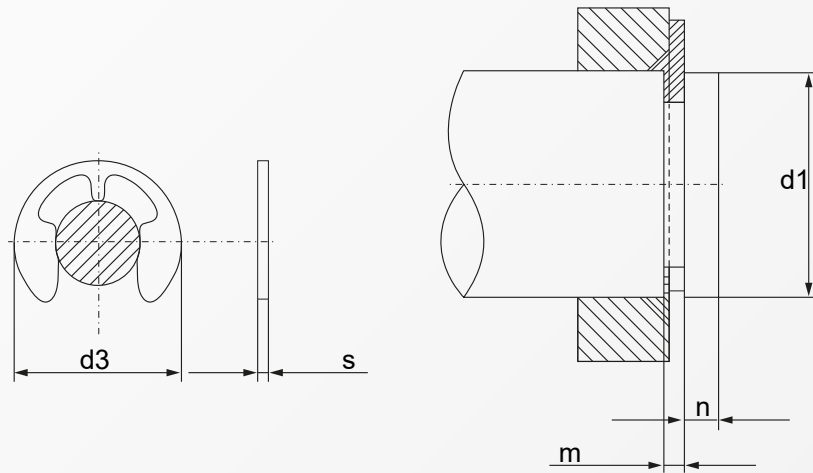


RoHS Directive Compliance



RETAINING RING FOR SHAFTS (E-TYPE)

STEEL BLACK | STAINLESS STEEL 1.4122**



Dimensions	d_3	s	for shafts $\varnothing d_1$	m	n
0.8	2.25	0.2	1 - 1.4	0.24	0.4
1.2	3.25	0.3	1.4 - 2	0.34	0.6
1.5	4.25	0.4	2 - 2.5	0.44	0.8
1.9	4.8	0.5	2.25 - 3	0.54	1
2.3	6.3	0.6	3 - 4	0.64	1
3.2	7.3	0.6	4 - 5	0.64	1
4	9.3	0.7	5 - 7	0.74	1.2
5	11.3	0.7	6 - 8	0.74	1.2
6	12.3	0.7	7 - 9	0.74	1.2
7	14.3	0.9	8 - 11	0.94	1.5
8	16.3	1	9 - 12	1.05	1.8
9	18.8	1.1	10 - 14	1.15	2
10	20.4	1.2	11 - 15	1.25	2
12	23.4	1.3	13 - 18	1.35	2.5
15	29.4	1.5	16 - 24	1.55	3
19	37.6	1.75	20 - 31	1.80	3.5
24	44.6	2	25 - 38	2.05	4

Above datas are for reference only
**stainless material up to diameter 19

Part number built example:

e.g. (1) Select Diameter 5.0 in steel material » SF-K010 5.0
e.g. (2) Select Diameter 6.0 in stainless material » SF-K100 6.0



sales@synergixfast.com



www.synergixfast.com



Phone: +65 6 316 2630 | Fax: +65 6 316 2730