



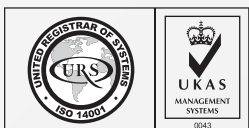
SF-M010 SERIES

ISO 8734-m6
DIN 6325-m6

STEEL PLAIN

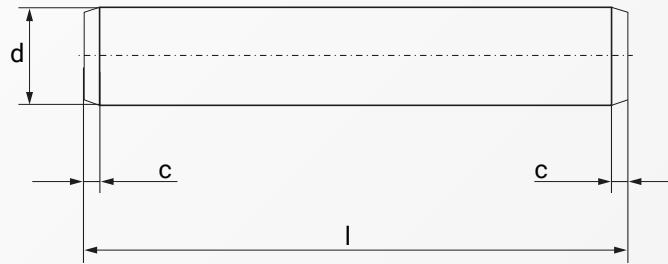


RoHS Directive Compliance

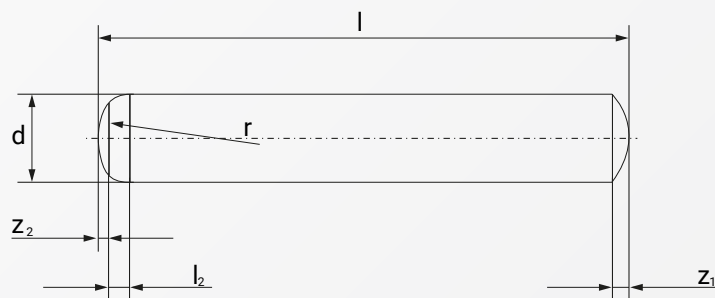


PARALLEL PINS Tolerance m6 (THRU. HARDENED)

STEEL PLAIN



ISO 8734-m6



DIN 6325-m6

Dimension	l_2	r	z_1	z_2	c	Length
1	0.4	1	0.15	0.08	0.2	from 4mm
1.5	0.5	1.5	0.23	0.12	0.3	from 4mm
2	0.6	2	0.3	0.18	0.35	from 4mm
2.5	0.7	2.5	0.4	0.25	0.4	from 6mm
3	0.8	3	0.45	0.3	0.5	from 6mm
4	1	4	0.6	0.4	0.63	from 6mm
5	1.2	5	0.75	0.5	0.98	from 8mm
6	1.5	6	0.9	0.6	1.2	from 8mm
8	1.8	8	1.2	0.8	1.6	from 10mm
10	2	10	1.5	1	2	from 16mm
12	2.5	12	1.8	1.3	2.5	from 20mm
14	2.5	16	2	1.3	-	from 50mm
16	3	16	2.5	1.7	3	from 30mm
20	4	20	3	2	3.5	from 40mm

Above datas are for reference only
ISO 8734 replaces DIN 6325

Part number built example :
e.g. (1) Select Diameter 6X20 in steel material >>SF-M010 6X20



sales@synergixfast.com



www.synergixfast.com



Phone: +65 6 316 2630 | Fax: +65 6 316 2730