



SF-M220 SERIES
SF-M225 SERIES

ISO 1234
DIN 94~

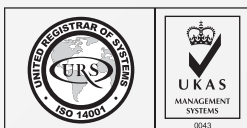
STAINLESS
STEEL

A2 | A4

PASSIVATED

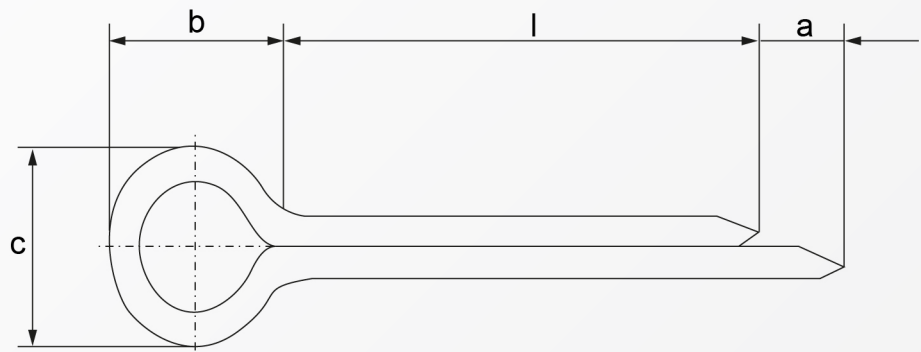


RoHS Directive Compliance



SPLIT PINS

STAINLESS A2 & A4



Dimensions	a _{min.}	b	c _{max.}	pin hole Ø	for screw Ø	for clevis pin Ø	Length
1	0.8	3	1.8	1	3.5 - 4.5	3 - 4	from 8mm
1.2	1.25	3	2	1.2	4.5 - 5.5	4 - 5	special request
1.6	1.25	3.2	2.8	1.6	5.5 - 7	5 - 6	from 8mm
2	1.25	4	3.6	2	7 - 9	6 - 8	from 10mm
2.5	1.25	5	4.6	2.5	9 - 11	8 - 9	from 12mm
3.2	1.6	6.4	5.8	3.2	11 - 14	9 - 12	from 16mm
4	2	8	7.4	4	14 - 20	12 - 17	from 20mm
5	2	10	9.2	5	20 - 27	17 - 23	from 25mm
5.5*	2	12.6	11	5.5	21 - 27	18 - 23	special request
6.3	2	12.6	11.8	6.3	27 - 39	23 - 29	from 32mm
8	2	16	15	8	39 - 56	29 - 44	from 36mm
10	3.2	20	19	10	56 - 80	44 - 69	from 63mm
13	3.2	26	24.8	13	80 - 120	69 - 110	from 71mm
16	3.2	32	30.8	16	120 - 170	110 - 160	special request

Above datas are for reference only
*dimensions not listed in standard

Note:
M220 denotes Stainless A2 & M225 denotes Stainless A4

Part number built example:

e.g. (1) Diameter 5 X 25 in stainless A2 material » SF-M220 5X25
e.g. (2) Diameter 6.3 X 50 in stainless A4 material » SF-M225 6.3X50



sales@synergixfast.com



www.synergixfast.com



Phone: +65 6 316 2630 | Fax: +65 6 316 2730